



FINISHING
ASSOCIATES
Blast. Edge. Surface Technologies.

USED EQUIPMENT OFFERING

Almco V-17

- o ALMCO V17 TUB
- o \$11,900.00
- o Urethane is in good shape
- o Includes One Divider
- o Unload chute for parts separation



Royson Vibe

- o \$1200.00
- o 110 V
- o 2.5 cu. ft.
- o On/off controls.
- o Urethane liner is in good condition.



Baron Blakeslee MLW-120

- o \$500.00
- o 110V, 1Ph, 60 Hz
- o Weight: 225 lbs
- o Dimensions: 24"W
x 44"L x 37"H



Roll Flow EVF08R

- o Q.U.R.
- o 460VAC, 3ph, 60HZ.
- o 15,945 hrs.
- o Urethane in good condition.



Power Roll Flow EVFX-01

- o \$12,500.00
- o Operates as a disk with the force of a centrifugal barrel
- o Tilts for unload
- o Lab machine with only 27 hrs.
- o 230VAC, 3ph, 60Hz



Sweco FMD10HA (Green)

- o \$8,500.00
- o Voltage: 460 VAC
- o HP 5
- o 1200 RPM
- o 3 Phase
- o New on/off controls



RotoFinish ER-0405

- o \$7,500.00
- o Voltage: 230, 3 phase, 60 Hz
- o 4.5 cu. ft. capacity
- o Internal Separation
- o Stand Alone Control Panel
- o Urethane in good shape



ADF WP800, Parts Washer

- o \$1800.00
- o Voltage: 460
- o 3 phase
- o 60 Hertz
- o Comes with new filters



UB-50(2)

- o **SOLD**
- o DEMO UNIT, Like new.
- o 220v, Single Phase
- o 1.75 cu. ft.
- o 31" Diam.
- o 8 ½" Channel
- o VFD: QUR



CD-18

- o \$4,850.00
- o 220 Single Phase
- o Low Runtime:
Under 50 Hrs
- o Built-in Separation
- o VFD
- o Recirculation tank
and pump included.
- o NEW Disc



Better Engineering F3000 Washer

- o \$2,900.00
- o 460VAC, 3 ph, 60Hz
- o 30" turntable diam.
- o 36" work height
- o 60PSI/75GPM pump output

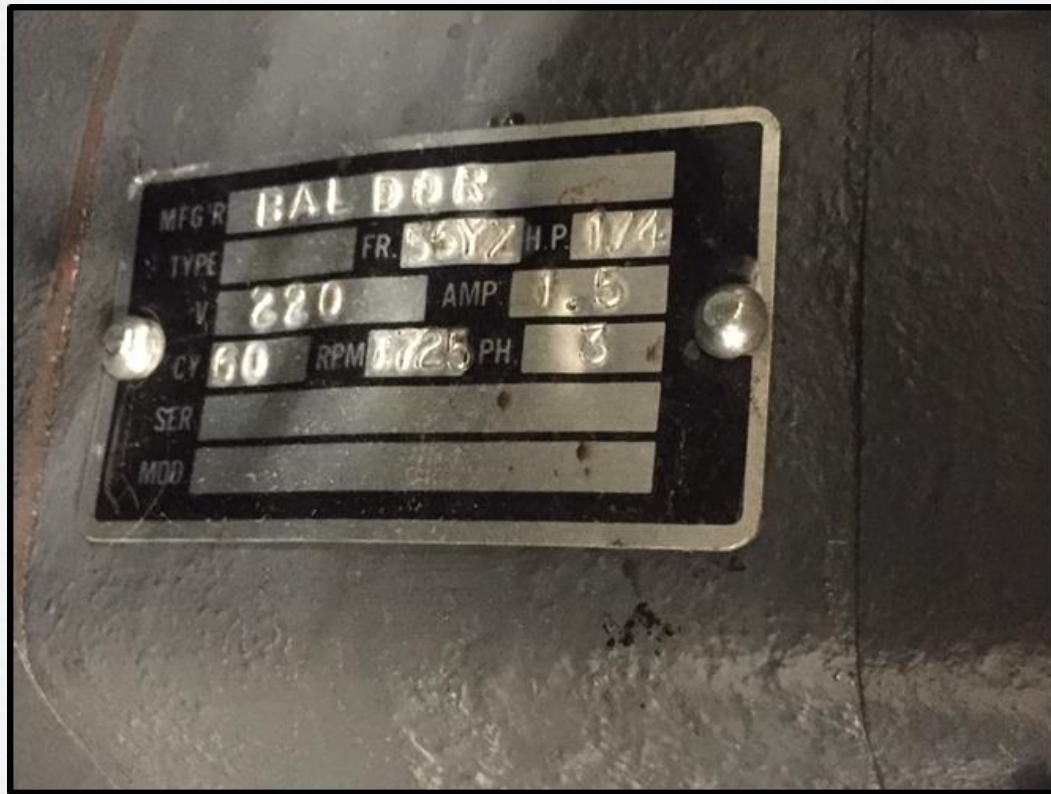


Torex T6026P

- o \$12,500
- o 7.5 hp
- o 12 cu. ft. capacity
- o Internal separation w/ manual gate
- o 2,200 lbs.







MFG R	BALDOR		
TYPE		FR. 55Y2	H.P. 174
V.	220	AMP.	1.5
CY	60	RPM 1725	PH. 3
SER			
MOD			

Miji-Lif Washer

- o **SOLD**
- o 240 Volt / 1 P / 60 Hz
- o 26 Amps
- o Heat up time from cold start - 2 hours
- o New pneumatic parts and fittings







Gyra Vibe

- o \$9,500
- o 230 / 460 Volt
- o 8.2 / 4.1 Amp
- o 60 Hz
- o 3 PH
- o 1800 RPM





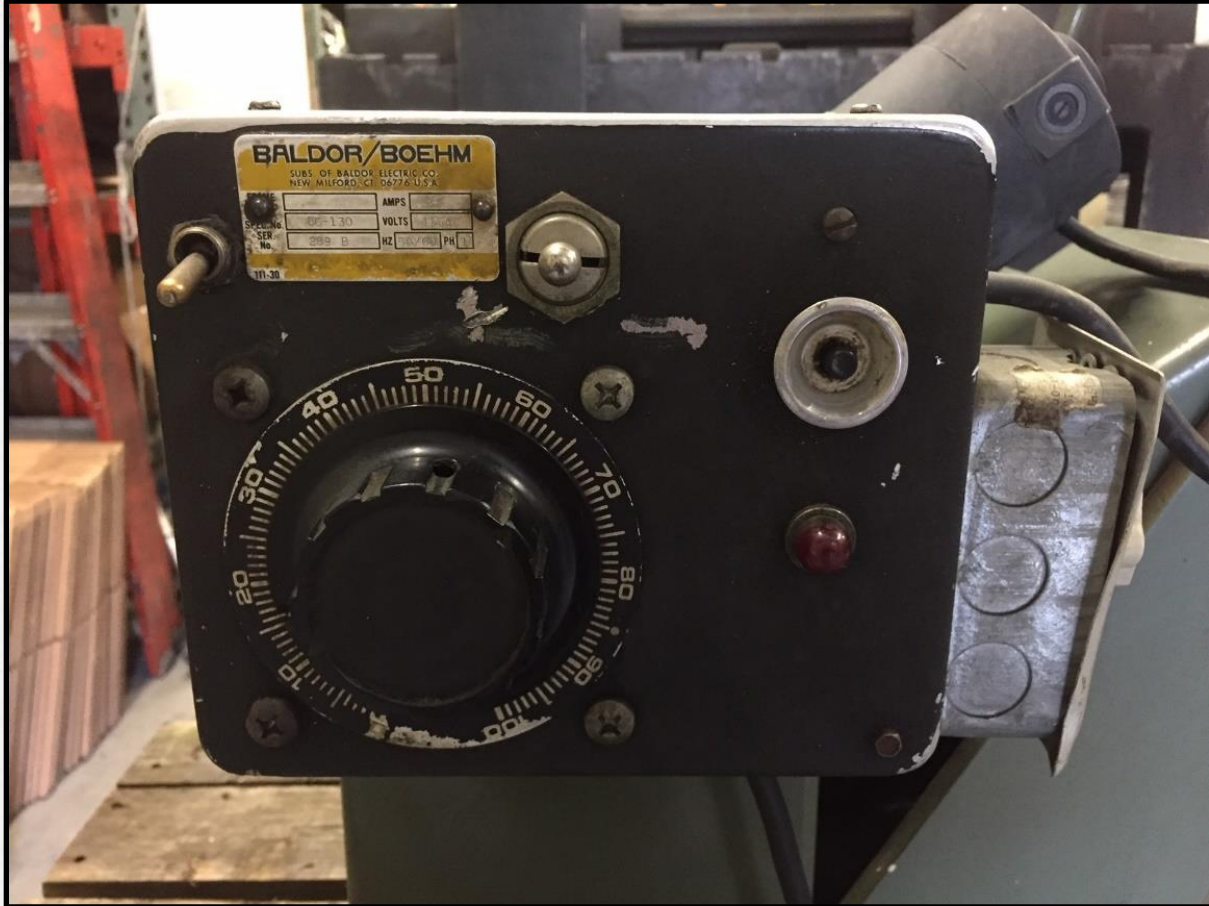


Baldor Tumbler

- o **\$1850.00**
- o 115 Volts
- o 60 hz
- o 3 amps
- o Lined Chamber
- o INDUSTRIAL tabletop
Tumbler
- o Barrel Dimensions:
Depth - 13 ¼"
Opening - 8 ½"
Base - 12 ¼"
- o Machine Dimensions:
33" x 30" x 14"







Sweco FM-10HA

- o \$9200.00
- o 1200 RPM
- o 5 HP
- o 3 Phase
- o Great Liner
- o Very Clean Machine









**SWECO Vibro-Energy**
Finishing Mill
MODEL SV-10 HA SERIAL NO. 1017-467-43
RPM 1150 HP 1/2 VOLTS 0V PHASE 3
SOUTHWESTERN ENGINEERING CO., LOS ANGELES, CAL.
U.S. PATENTS: 2,882,054 PATENTED IN CANADA IN 1950
2,083,454 OTHER PATENTS PENDING
3,100,068
DIRECTION OF MOTOR ROTATION 

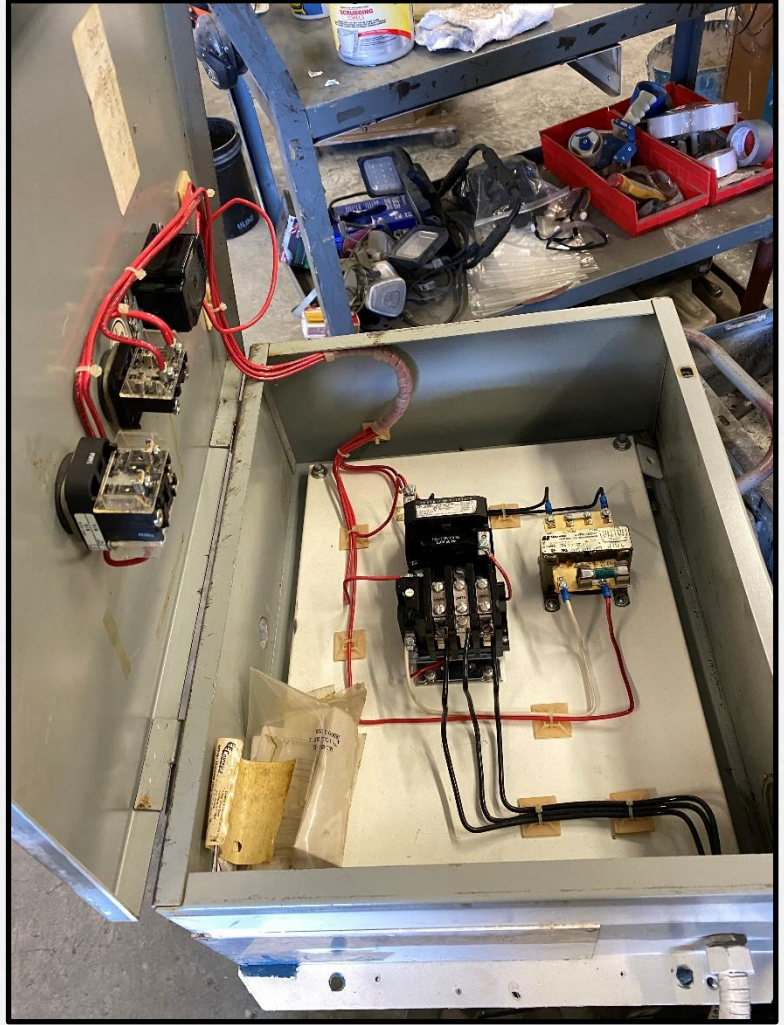
OLIVETTI UNDERWOOD
0086
CORPORATION EQUIPMENT

Baird Tumbler

- o **\$1850.00**
- o 1/4 HP
- o 90 Volts
- o 2.4 Amps
- o Compact, tabletop
INDUSTRIAL TUMBLER
- o Barrel Dimensions:
Depth - 13 1/4"
Opening - 8 1/2"
Base - 12 1/4"
- o Machine Dimensions:
33" x 30" x 14"







Zero BNP 30-4 Blast Cabinet

- o \$
- o 115 V
- o 1 Amp



Trinco Blast Cabinet

0 \$



Sweco FMD14LR

- o \$14,500
- o 4 more models in stock awaiting refurbishment
- o 14 ft³ (4200 lbs. load capacity)
- o 5 hp
- o 480 V



Rampe Super Twin

- o \$750
- o Channel Dimensions: 14" wide x 15" deep
- o Machine Dimensions: 47" x 34" x 51"
- o 3 phase
- o 230 V
- o 60 hz





ADF Blast Cabinet

o \$5800



Vibratub Model 33

o \$800

o 120 V





Royson

- o \$3,500
- o 2 hp
- o 1760 rpm
- o 8 inch Channel
- o 31" Diameter Bowl
- o 110 Volt
- o ON/OFF Base Mount Switch





Empire Blast 2436

- o \$3250.00
- o Very Good Condition
- o New Gloves and Glass
- o Inside cabinet dim: 36" x 25" x 30"
- o With DCM-80 Dust Collector



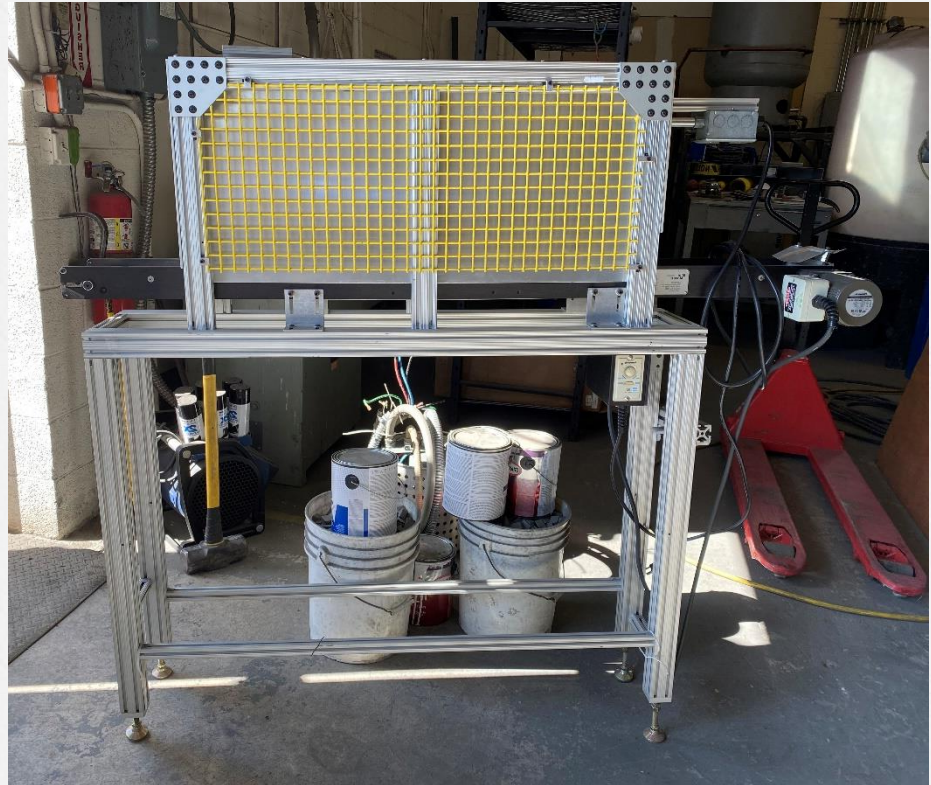






Custom Belt Dryer

- o \$450.00
- o Custom Machine
- o 120 V





Rotofinish

- o \$2000.00
- o 5 Cubic Foot Batch Machine
- o Can be made to have external separation
- o Oil reservoir
- o Runs well

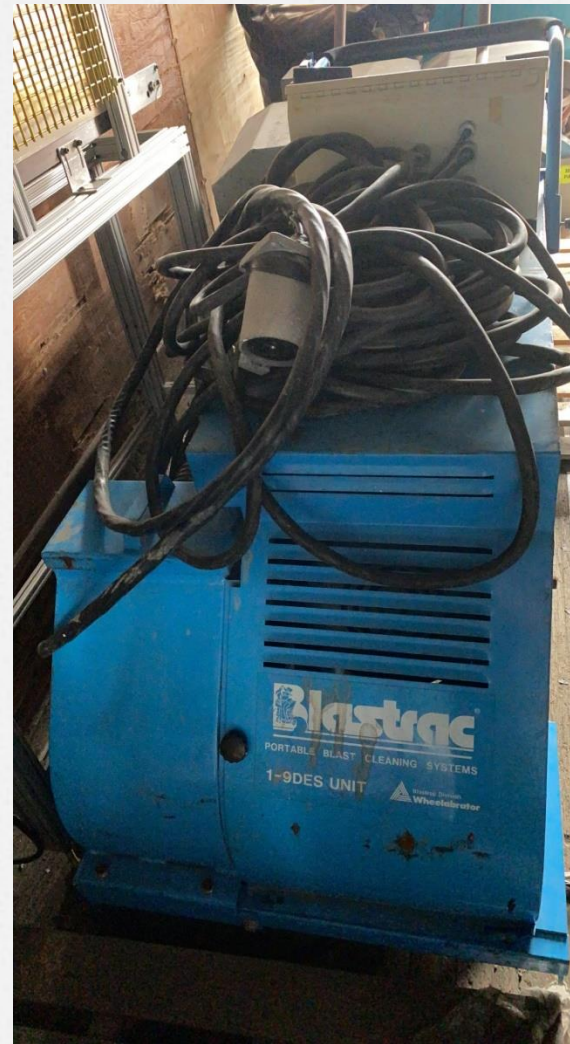






Blastrac Portable Blaster

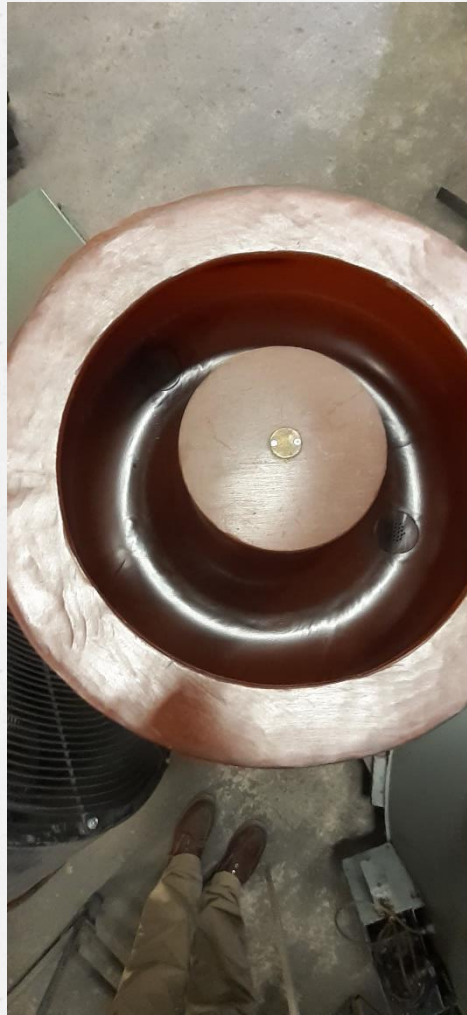
- o \$9500
- o Good Condition
- o Cleans all floor surface with steel shot blast
- o 230Volt with Plug
- o 50 Amps
- o Single Phase





Sweco FM01C-3

o \$3400



Rampe Dual Barrel

- o **\$1500**
- o 115 Volts
- o 60 Hz
- o Barrel Dimensions:
Inner Width – 8”
Inner Length – 8”
Opening – 6” x 4”
- o Machine Dimensions:
30” x 28” x 28”



